

TEL: 011-23230139
FAX: 011-23234637



HEADQUARTERS OFFICE
EMPLOYEES' STATE INSURANCE CORPORATION
PANCHDEEP BHAWAN, C.I.G. ROAD, NEW DELHI
(ISO: 9000-2001 Certified)
Website: <http://esic.nic.in> / www.esic.org.in

No. D-24/11/Driver's Liv/08-09-Genl.

Dated: 30.09.2008

C I R C U L A R

SUB.: LIVERIES TO STAFF CAR DRIVERS AND GROUP 'D' EMPLOYEES

Representations have been received from various quarters to improve the quality of the cloth for uniforms. It has been considered favourably and the Competent Authority has approved the revised rates for cloth and stitching charges as mentioned in Annexure -A

The description of the colour, design and other requirements have been given in Annexure -A. The periodicity, length of cloth to be supplied, entitlement etc., will remain the same except amendments as shown in Annexure -A

As a welfare measure, the quality of the uniforms has been enhanced; as such it has to be ensured by the Controlling Authorities that the employees entitled for uniform wear it. Nevertheless over all responsibility for ensuring the compliance of instructions will rest with Heads of the Offices.

Earlier instructions on the subject stand amended to the extent of changes made in Annexure -A.

To

All AC/RD, ROs, AC (NTA), JD (I/c), SROs, DO
MS/D(M)D, DM Noida,

(M.S.DAHIYA)
IT. DIRECTOR (G)

IT. DIRECTOR (G)

ESIC- Chinta Se Muktam

ANNEXURE - A

Sl. No.	Categories of Employees	Articles	Colour	Rates (upper ceiling) (Rs.)	Remarks
I	STAFF DRIVERS	CAR			
	Summer Dress	Safari Suit	Dark Grey	Rs.400 per mt.	3 sets of safari suit every two years
	Winter Dress	Bata Shoes	Black	Rs.1099 per pair	
		Coat Pant	Dark Grey	Rs.400 per mt.	
		Shirt Cloth	White	Rs.150 per mt.	

II Group 'D' & for Group "C" entitled category only**GENTS**

Woolen Suit	Dark Grey	Rs.400 per mt.
Cloth		
Over Coat	Dark Grey	Rs.160 per mt.
Cloth		
Jercy	Dark Grey	Rs.500
Bata Shoes	Black	Rs.800 per pair
Socks	Dark Grey	Rs.40 per pair
Pant Cloth	Dark Grey	Rs.300 per mt.
Shirt Cloth	white	Rs.150 per mt.

LADIES

Half Coat	Dark Grey	Rs.400 per mt.
Cloth		
Blouse Cloth	Light Grey	Rs.150 per mt.
Petticoat cloth	Dark Grey	Rs.60 per piece
Saree	Dark Grey	Rs.500 per saree
Bata Chappal	Black	Rs.200 per pair

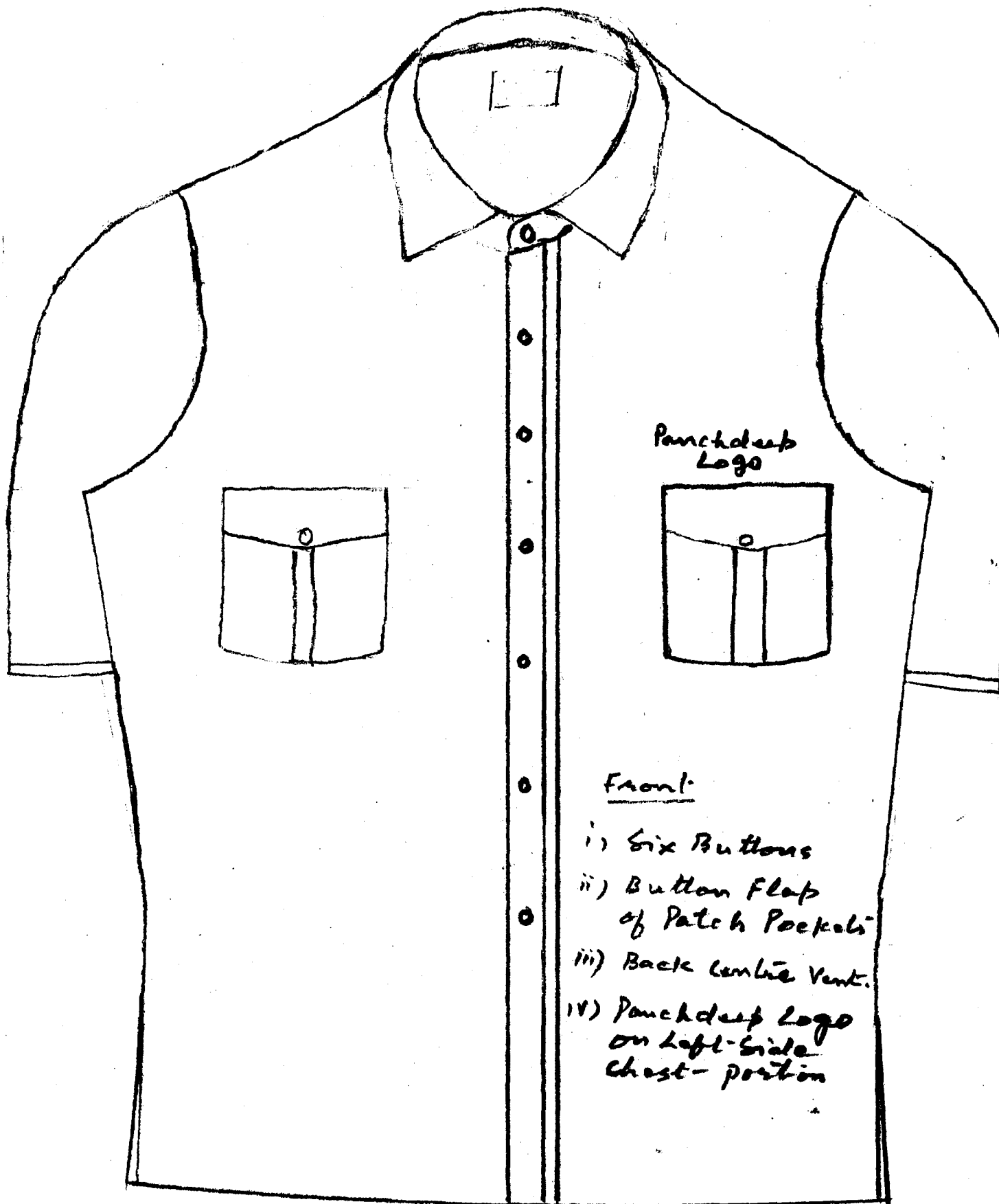
STITCHING CHARGES

Sl. No.	Articles	Rates (upper ceiling)	Remarks
1	Safari Suit	Rs. 400	As per enclosed design
2	Woolen Suit	Rs.600	Prince coat
3	Over Coat	Rs.500	
4	Ladies Half Coat	Rs.500	
5	Pant	Rs.180	
6	Shirt	Rs.80	
7	Blouse	Rs.60	
8	Petticoat	Rs.40	

ESIC, Chhota Se. Bhatti

SUFFARI TOP

TWO FLAP POCKET



Punchdeep
Logo

Front:

- i) Six Buttons
- ii) Button Flap
of Patch Pockets
- iii) Back Centre Vent.
- iv) Punchdeep Logo
on Left-Side
Chest-portion

